

ONLINE AUCTION



Tubular Steel, Inc.

Assets Surplus to the
Ongoing Operations of a
Leading Tube & Pipe
Manufacturer

SALE CLOSING

Tuesday, November 18, at 11 AM CT

ASSET LOCATION

7220 Polson Lane
Hazelwood, MO 63042

INSPECTION

Monday, November 17, from 8:30 AM
to 4:30 PM CT, or by appointment

**PRE-AUCTION
OFFERS INVITED
ON MAJOR ASSETS**

COMPLETE CATALOG & INFORMATION:

<https://perfection.global/tubular>



PANGBORN ES-1821-126 ROTOBLAST ROLLER CONVEYOR BLAST MACHINE



(4) PETTIBONE SUPER 20 204-H CARY-LIFT RT FORKLIFTS

FEATURING: 2015 PANGBORN ES-1821-126 ROTOBLAST ROLLER CONVEYOR SHOT BLAST SYSTEM, DELTA 72" X .250" CUT-TO-LENGTH LINE, 2006 KASTO WAS 90R AUTOMATIC COLD SAW, 2008 HEM VT 120HA 60 SMART SAW AUTO. VERT. BAND SAW, (4) PETTIBONE SUPER 20 CARY-LIFT 20,000 LB. RT FORKLIFTS, (4) DIESEL FORKLIFTS, (9) GREAT DANE & MANAC 48' FLATBED TRAILERS, FREE STANDING CRANES, FACTORY SUPPORT EQUIPMENT, AND MORE



**PERFECTION
Industrial Sales**

Perfection Industrial Sales

ph +1-847-545-6374 • fax +1-847-427-8884

www.perfectionindustrial.com

Bidding Available Through

BidSpotter

SHOT BLAST, COLD & BAND SAWS, CUT-TO-LENGTH LINE

SHOT BLAST

2015 PANGBORN ES-1821-126 ROTOBLAST ROLLER CONVEYOR BLAST MACHINE, s/n na, w/ (4) 150DD-2.5G1 GENESIS ROTOBLAST 25 HP Vanes, 30" Diameter Tubes x 500 lb./ft., 3600 RPM, 187,500 lb./hr. Abrasive Flow Capacity, 9'10"L x 7-3"W x 7'9"H Cabinet, 122.5 Total Machine HP, PANGBORN/TORIT DownFLO DF03-6 6-Cartridge 7.5 HP Collection System, CURTIS 5 HP Air Compressor, 50' Entry and Exit Roller Conveyors, Spare Parts and Screw

COLD & BAND SAWS

2006 KASTO WAS90R AUTOMATIC COLD SAW, s/n 3090 101 008, w/ 10-3/4" Cutting Range w/ Saw Blade, 5/8" - 2-3/4" Rounds Cutting Capacity, 5/8" - 2-1/4" Square Stock & Tube Cutting Capacity, 5/8" x 5/8" Min. Flat Stock, 4-1/2" x 2-1/8" Max. Flat Stock, 110-670 SFPM Cutting Speed, 25' Loader, NN1100 Deburrer

2008 HEM VT 120HA 60 SMART SAW AUTOMATIC VERTICAL BAND SAW, s/n 1043408, w/ Free Standing Control Console (Smart Saw System), 90° Saw Capacity: 18" x 24", Left Miter Capacity: 18" x 16" @ 45°, 18" x 10" @ 60°, Right Miter Capacity: 18" x 14.75" @ 45°, 18" x 9" @ 60°, 3° Arm Cant, 1.25" x 16'6" x 0.42" Blade Size, 7.5 HP Blade Drive, 5 HP Hydraulic System, 60-400 SFPM Variable Speed Drive, 72" Shuttle Vise, Coolant System, Auto Feed System, Full Capacity Tool Clamp, Power Tilt, Coolant System, Blade Chip Brush (Located in Eldridge, IA)



KASTO WAS90R AUTOMATIC COLD SAW



PANGBORN ES-1821-126 ROTOBLAST ROLLER CONVEYOR BLAST MACHINE



PANGBORN/TORIT DF03-6 DUST COLLECTION SYSTEM



HEM VT 120HA 60 SMART SAW AUTOMATIC VERTICAL BAND SAW

CUT-TO-LENGTH LINE

DELTA 72" X .250" CUT-TO-LENGTH LINE, s/n na, w/ Unico PLC Control Station (Delta Software), 72" Max. Coil Width, 72" Max. Coil OD, 240" Coil Length, 50,000 lb. Max. Coil Weight, Material Thickness: .05"-.25" Aluminum Thickness, .188" Carbon Steel, .135" Stainless, COILTECH 4-Arm Turnstile, Uncoiler w/ Snubber Roll, Peeler Table, DELTA 19 Roll 4-Hi Precision Leveler w/ 250 HP Motor, 40,000 lb. Capacity Traveling Coil Car w/ Elevation & In/Out Movement, Automatic Stacker, 250 HP DC Drive (Located in San Antonio, TX) Please Note: Leveler Requires Screw Jack Replacement



DELTA 72" X .250" CUT-TO-LENGTH LINE



UNCOILER W/ SNUBBER ROLL



40,000 LB COIL CAR



COILTECH 4-ARM TURNSTILE

For auction inquiries,
please contact Jennifer Reiner
at (847) 545-6374 or
jennifer@perfectionindustrial.com

ROUGH TERRAIN FORKLIFTS, DIESEL FORKLIFTS, BRIDGE & JIB CRANES

ROUGH TERRAIN FORKLIFTS

2006 PETTIBONE SUPER 20 204-H CARY-LIFT 20,000 LB. ROUGH-TERRAIN FORKLIFT, s/n 5651, w/ 12,000 lb. Extended Capacity, 16,000 lb. Extended Tipping Capacity, 10' Baler Attachment, CUMMINS Diesel Engine, 6,740 Hours

PETTIBONE SUPER 20 204-G CARY-LIFT 20,000 LB. ROUGH-TERRAIN FORKLIFT, s/n 5109, w/ 12,000 lb. Extended Capacity, 16,000 lb. Extended Tipping Capacity, 10' Baler Attachment, DETROIT Diesel Engine, 5,920 Hours

PETTIBONE SUPER 20 FB204 CARY-LIFT 20,000 LB. ROUGH-TERRAIN FORKLIFT, s/n 1352, w/ 12,000 lb. Extended Capacity, 16,000 lb. Extended Tipping Capacity, 10' Baler Attachment, DETROIT Diesel Engine, 7,332 Hours

PETTIBONE SUPER 20 204-D4 CARY-LIFT 20,000 LB. ROUGH-TERRAIN FORKLIFT, s/n 4551, w/ 12,000 lb. Extended Capacity, 16,000 lb. Extended Tipping Capacity, 10' Baler Attachment, DETROIT Diesel Engine, 8,871 Hours

DETROIT DIESEL V6 REBUILT MOTOR BY CAL'S POWERTRAIN 2023, for PETTIBONE 204 Cary-Lift Rough Terrain Forklifts



PETTIBONE SUPER 20 204-H CARY-LIFT 20,000 LB. ROUGH-TERRAIN FORKLIFT



PETTIBONE SUPER 20 204-H CARY-LIFT ROUGH-TERRAIN FORKLIFT



DETROIT DIESEL V6 REBUILT MOTOR

DIESEL FORKLIFTS

CATERPILLAR DP40 8,000 LB. DIESEL FORKLIFT, s/n 3CM12627, w/ 48" Fork Length, Fork Positioners, 98" Lowered Mast Height, 10° Rearward Mast Tilt, 45.7" Load Tire Tread Width, Pneumatic Tires, 10,173 Hours

TOYOTA 8FD35U 8,000 LB. DIESEL FORKLIFT, s/n 10785, w/ 48" Fork Length, Fork Positioners, 179" Max. Lift Height, 116" Lowered Mast Height, 12° Back Tilt, 43.9" Front Tire Tread, Pneumatic Tires, 7,184 Hours

TOYOTA 8FD35U 8,000 LB. DIESEL FORKLIFT, s/n 11922, w/ 48" Fork Length, Fork Positioners, 179" Max. Lift Height, 116" Lowered Mast Height, 12° Back Tilt, 43.9" Front Tire Tread, Pneumatic Tires, 4,257 Hours

MITSUBISHI FD30K 6,000 LB. DIESEL FORKLIFT, s/n AF14C-35102, w/ 48" Fork Length, Fork Positioners, 94" Lowered Mast Height, Pneumatic Tires, 7,756 Hours



CAT, TOYOTA, MITSUBISHI DIESEL FORKLIFTS

BRIDGE & JIB CRANES

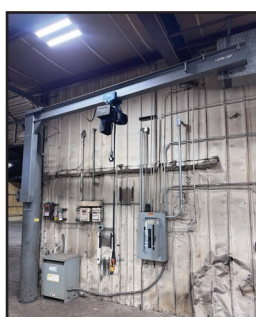
GORBEL 2-TON FREE STANDING BRIDGE CRANE, w/ Approx. 45'L x 14' Span, 16' Total Height, COFFING JLC Electric Hoist, Pendant Control

(2) GORBEL 1-TON FREE STANDING JIB CRANES, w/ Approx. 13'H x 18' Reach, DEMAG Electric Hoist, Pendant Control

DEMAG 1/2-TON JIB CRANE, w/ Approx. 12'H x 13' Reach



GORBEL 1-TON FREE STANDING JIB CRANE



DEMAG 1/2-TON JIB CRANE



GORBEL 2-TON FREE STANDING BRIDGE CRANE

TRAILERS & SUPPORT EQUIPMENT

TRAILERS & SUPPORT EQUIPMENT

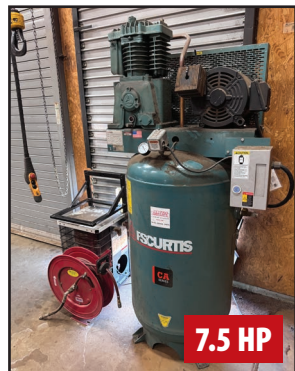
(8) 2017-2012 GREAT DANE GPS-0023-00048 FREEDOM FLATBED TRAILERS, See Catalog for VIN, 8'W x 48'L Bed, Titles Included (Located in East Peoria, IA)

2016 MANAC 10248K011 FLATBED TRAILER, VIN MC124812G5153107, 8'W x 48'L Bed, Title Included (Located in East Peoria, IA)

STARRCO MODULAR PLANT OFFICE, 10' x 20'

CURTIS FCA07E57V8S-A4L1XX 7.5 HP AIR COMPRESSOR, s/n CA07E57D19171, 175 PSI, Approx. 60 Gallon Air Tank, w/ CURTIS RNP35 Air Dryer

(3) ULINE H-4436 IBC SPILL CONTAINMENT PLATFORMS, 385 Gallon, 8,000 lb. Capacity



CURTIS FCA07E57V8S-A4L1XX AIR COMPRESSOR



GREAT DANE GPS-0023-00048 FREEDOM FLATBED TRAILER



ULINE H-4436 IBC SPILL CONTAINMENT PLATFORM



STARRCO MODULAR PLANT OFFICE



GREAT DANE GPS-0023-00048 FREEDOM FLATBED TRAILER



MANAC 10248K011 FLATBED TRAILER

For auction inquiries, please contact Jennifer Reiner at (847) 545-6374 or jennifer@perfectionindustrial.com

View our current auction schedule at www.perfectionindustrial.com

SALE CLOSING

Tuesday, November 18, at 11 AM CT

ASSET LOCATION

7220 Polson Lane
Hazelwood, MO 63042

INSPECTION

Monday, November 17, from 8:30 AM to 4:30 PM CT, or by appointment

REMOVAL

All items must be removed by Friday, December 5. All removal is strictly on an appointment only basis. Anyone removing purchased items with a lift truck or another powered vehicle must have a certificate of insurance with a \$2M General Liability policy, the policy must include a Worker's Compensation rider, and that certificate of insurance must be provided to the auctioneer for review and approval prior to the auction.

TERMS OF SALE

An 18% Buyer's Premium will be charged on all assets purchased by buyers providing full payment is made within 48 hours following the sale. Acceptable forms of payment are cashier's check, company check (with bank letter of guarantee) or wire transfer within 48 hours of the sale close. For any Buyers failing to pay within the 48 hour stated payment period, the Buyer's Premium will be increased to 20%. All invoices paid with a credit card are subject to a 20% Buyer's Premium, and credit card payments are only allowed up to a maximum of \$2,000 per auction. Everything will be sold to the highest bidder, in accordance with the Auctioneer's customary "Terms of Sale", copies of which will be posted on the Auctioneer's website and subject to additional terms announced the day of sale. All items are sold "As is, Where is" without any warranty, express or implied.

FURTHER INFORMATION

For auction inquiries, please contact Jennifer Reiner at (847) 545-6374 or jennifer@perfectionindustrial.com.

Bidding Available Through
BidSpotter