

2-DAY AUCTION LIVE WEBCAST & ONLINE

DAY 1 • LIVE WEBCAST AUCTION

SALE DATE

Tuesday, November 19 at 10 AM CT

DAY 2 • ONLINE AUCTION

SALE CLOSING FROM

Wednesday, November 20 at 10 AM CT

SALE LOCATION

828 4th Street NW
Elk River, MN 55330

INSPECTION

Monday, November 18, from 8:30 AM
to 4:30 PM CT, or by appointment

**PRE-AUCTION
OFFERS INVITED
ON MAJOR ASSETS**

COMPLETE CATALOG & INFORMATION:

<https://perfection.global/ermc>

FEATURING: 2017 DMG MORI NHX10000 HMC; TOSHIBA BMC-100E HMC; 2016 DMG MORI NLX2500SY/700 5 Axis Turning Center; (2) MORI SEIKI ZL-45B/1500 & (1) SL-400BMC/2000 Turning Centers; 2016 MORI SEIKI NVX7000/50 VMC; Boring Mills; HD Facing & Engine Lathes; 2013 MESSER MPC2010 CNC Plasma Cutter; (2) MARVEL 2150TS & 81A11PC Vert. Bandsaws; 2013 WHEELABRATOR TUMBLAST; Metal Fabrication Equipment; CMM's; PERFORMARC, PRI & OTC Robotic Welding Cells – New as 2014; MILLER, FRONIUS & LINCOLN MIG & TIG Welders w/Booms – New as 2015; Weld Tables & Positioners; Tool Room; (10) Forklifts up to 22,500 Lbs.; 2023 PNEUTECH 50 hp Air Compressor & Dryer; (17) Free Standing & Overhead Bridge Cranes– up to 15 Ton; Factory Support Equipment; Large Qty. of Live Tooling, Tool Holders & Perishable Tooling; Huge Quantities of Plate, Tube, & Sheet Steel; and more

ERMCO

Complete Machining, Fabrication, Welding, & Finishing Facility Closure



DMG MORI NHX10000 4-AXIS HMC



MESSER MPC2010 3-AXIS CNC PLASMA CUTTER



**PERFECTION
Industrial Sales**

Perfection Industrial Sales

ph +1-847-545-6374 • fax +1-847-427-8884

www.perfectionindustrial.com

In
conjunction
with:



(3) HORIZONTAL MACHINING CENTERS, (4) TURNING CENTERS

(3) HORIZONTAL MACHINING CENTERS

2017 DMG MORI NHX10000 4-AXIS HORIZONTAL MACHINING CENTER, s/n NH10C170201, w/ DMG MORI F31iA Control, Twin 39.5" x 39.5" Pallets, Travels: X-66.9", Y-55.1", Z-59.4", 6,614 lb. Max. Work Weight, 120-ATC, CAT 50 Spindle, 6000 RPM, CHIP BLASTER High Pressure Coolant, Chip Conveyor

TOSHIBA BMC100E 4-AXIS HORIZONTAL MACHINING CENTER, s/n 212565, w/ TOSNUC 800 Control, Twin 49" x 49" Pallets, Travels: X-78.7", Y-49.2", Z-47.2", 60-ATC, CAT 50 Spindle, 30 hp, Chip Conveyor

MORI SEIKI MH-63 4-AXIS HORIZONTAL MACHINING CENTER, s/n 594, w/ FANUC MF-M6 Control, Twin 24.75" x 24.75" Pallets, Travels: X-39.4", Y-33.46", Z-36.2", 6000 RPM, 60-ATC, CAT 50 Spindle, Chip Conveyor



TOSHIBA BMC100E 4-AXIS HMC



MORI SEIKI MH-63 4-AXIS HMC

(4) TURNING CENTERS

2016 DMG MORI NLX2500SY/700 5-AXIS TURNING CENTER, s/n NL256160745, w/ ERGOLINE CELOS Control, 36.4" Swing, 29.2" Max Turning Diameter, 27.8" Max Turning Length, X-10.2", Y-±1.96", Z-31.3", B-28.9" (Spindle 2 Travel), 4000 RPM Max Spindle Speed, 6000 RPM Max Sub Spindle Speed. 3" Bar Capacity, 12-Position Turret, Sub Spindle, Live Milling, Mist Collector, CHIP BLASTER High Pressure Coolant System

MORI SEIKI SL-400BMC/2000 TURNING CENTER, s/n 215, w/ MSC 501 Control, 27.95" Swing, 80" Centers, KITAGAWA B-18 18" 3-Jaw Power Chuck, 4.33" Bar Capacity, 12-Position Turret, C-Axis, Live Tooling, Tailstock, ROYAL Mist Collector, Chip Conveyor

MORI SEIKI ZL-45B/1500 TURNING CENTER, s/n 180, w/ MSC-501 Control, 19.3" Max Turning Dia, 63.7" Max Turning Length, 26.4" Swing Over Bed, 18.1" Swing Over Cross Slide, 66.6" Centers, Travels: X-10.6", Z-62.7", KITAGAWA B-24 24" 3-Jaw Power Chuck, 12-Position Upper Turret, 10-Position Lower Turret, Tailstock, Mist Collector

MORI SEIKI ZL-45B/1500 TURNING CENTER, s/n 140, w/ FANUC MF-D6 Control, 19.3" Max Turning Dia, 63.7" Max Turning Length, 26.4" Swing Over Bed, 18.1" Swing Over Cross Slide, 66.6" Centers, Travels: X-10.6", Z-62.7", 24" 3-Jaw Power Chuck, 12-Position Upper Turret, 10-Position Lower Turret, Tailstock, Mist Collector



MORI SEIKI SL-400BMC/2000 TURNING CENTER



DMG MORI NLX2500SY/700 5-AXIS TURNING CENTER



MORI SEIKI ZL-45B/1500 TURNING CENTER



MORI SEIKI ZL-45B/1500 TURNING CENTER

(2) VERTICAL MACHINING CENTERS, (3) HORIZONTAL BORING MILLS, (7) LATHES

(2) VERTICAL MACHINING CENTERS

2016 DMG MORI NVX7000/50 VERTICAL MACHINING CENTER, s/n NV701161003, w/ DMG MORI FOiMF Control, 66.9" x 29.9" Table, Travels: X-60.6", Y-29.9", Z-26", 6000 RPM, 60-ATC, CAT 50 Spindle Taper, CHIP BLASTER High Pressure Coolant System, Chiller, LNS Chip Conveyor

MORI SEIKI MV-653 VERTICAL MACHINING CENTER, s/n 25, w/ MSG-803 Control, 60" x 26" Table, 60" x 26" x 6" Sub Table, Travels: X-60", Y-25.9", Z-25.5", 787 IPM Rapids, 6000 RPM, 30-ATC, CAT 50 Spindle Taper, 25 hp, Chip Conveyor



2016 DMG MORI NVX7000/50 VMC



MORI SEIKI MV-653 VMC

(3) HORIZONTAL BORING MILLS

5.5" WOTAN RAPID 2 CNC FLOOR TYPE HORIZONTAL BORING MILL, s/n 68066, w/ SIEMENS SINUMERIK Control, Approx. Travels: X-236" Column, Y-80" Vertical, Z-39.4" Spindle, 27" Column Infeed, 276" x 98" T-Slot Floor Plate, 50 Taper Spindle, 3-2500 RPM, 60-ATC, (2) RUCKLE (EIMELDINGEN) Type RG-6 51" x 63" B-Axis Rotary Tables, Dual 51" x 22" Riser Tables, NOTE: RUCKLE Tables & Riser Tables Offered Separately

5.12" WOTAN B130 TABLE TYPE HORIZONTAL BORING MILL, s/n 54047, w/ 72" x 79" Built-In Rotary Table, Travels: X-78", Y-63", Z-35", W-69", 14-1000 RPM, 25 hp, 50 Taper Spindle, Power Draw, HEIDENHAIN POSITIP 855 Digital Readout, Pendant Controls

4.75" WOTAN B105R TABLE TYPE HORIZONTAL BORING MILL, s/n 52676, w/ 63" x 51" Built-In Rotary Table, Approx. Travels: X-71" Table, Y-49" Headstock, Z-27.5" Spindle, W-49" Column Infeed, 360 Deg. Table Rotation, 9-1000 RPM, NMTB 50 Taper Spindle, Power Drawbar, HEIDENHAIN Digital Readout



WOTAN RAPID 2 CNC FLOOR TYPE HBM



WOTAN B130 TABLE TYPE HBM



WOTAN B105R TABLE TYPE HBM

(7) LATHES

MERLI CLOVIS NO 50 50" X 384" HD LATHE, s/n 67087, w/ Speeds (16) 56-500 RPM, 48" 4-Jaw Chuck, Double Compound w/ 4-Way Tool Post, Tailstock, Inch-Metric Threading, (2) Steady Rests



MERLI CLOVIS NO 50 HD LATHE



VIEW OF BOX TABLES

PRE-AUCTION OFFERS INVITED ON MAJOR ASSETS

(7) LATHES, PLASMA CUTTING SYSTEM

(7) LATHES (CON'T)

OERLIKON DM4 34" X 240" GAP BED ENGINE LATHE, s/n 247063, 48" Swing in Gap, 36" 4-Jaw Face Plate, 6-1150 RPM, 35" 4-Jaw Chuck, Tool Post, Tailstock, Steady Rest, HEIDENHAIN Digital Readout

RAVENSBURG 48" X 60" GAP BED ENGINE LATHE, s/n 5516, 60" Swing in Gap, 3-135 RPM, 4-Way Tool Post, Tailstock, 10" Gap Length

WARNER & SWASEY M1500 28" X 60" TURRET LATHE, s/n 1284096, w/ 24" 4-Jaw Chuck, 8-424 RPM, 6-Position Turret, 4-Way Tool Post,

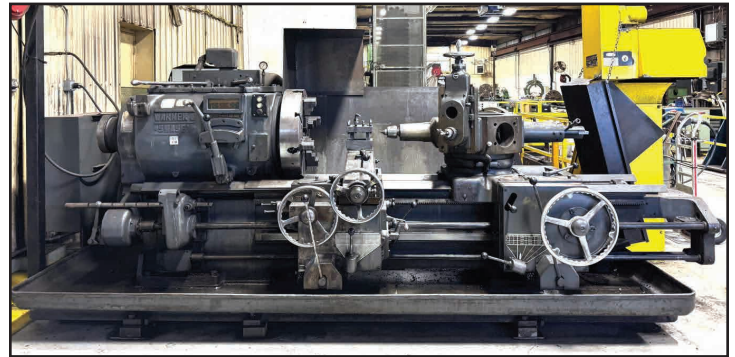
AMERICAN STYLE B 14" X 54" ENGINE LATHE, s/n 78916/70, w/ 12" 3-Jaw Chuck, 15-1000 RPM, Quick Change Tool Post, Taper Attachment, Tailstock, Steady Rest, HEIDENHAIN Digital Readout

OKUMA LS 18" X 54" ENGINE LATHE, s/n 4401-14000, w/10" 3-Jaw Chuck, Quick Change Tool Post, 35-1800 RPM, Tailstock, Steady Rest, NEWALL TOPAZ 2-Axis Digital Readout

DEAN SMITH GRACE 16SB 16" X 25" TURRET LATHE, s/n 37215-3-68, w/10" 3-Jaw Chuck, 15-1280 RPM, 6-Position Turret



RAVENSBURG 48"X60" GAP BED ENGINE LATHE



WARNER & SWASEY 28"X 60" TURRET LATHE



OERLIKON 34"X 240" GAP BED ENGINE LATHE



OKUMA 18"X 54" ENGINE LATHE



AMERICAN 14"X 54" ENGINE LATHE

PLASMA CUTTING SYSTEM

2013 MESSER MPC2010 3-AXIS CNC PLASMA CUTTING SYSTEM, s/n MPC2010P-13-5762, w/ GLOBAL Control, Dual Head – (1) Plasma, (1) Oxy Fuel, 10' x 40' Down Draft Table, HYPER THERM HPR400 XD 400 Amp Plasma Power Supply, Chiller, Dust Collector



MESSER MPC2010 3-AXIS CNC PLASMA CUTTER

Bidding Available Through
BidSpotter

BANDSAWS, TUMBLAST BATCH CLEANING SYSTEM, MOBILE SAND BLAST

BANDSAWS

MARVEL F2150TS AUTOMATIC VERTICAL BANDSAW, s/n F215010151TS, w/ WINDOWS Touch Screen Control, 20" x 25" Capacity, 0-60 Deg. Miter Cut Capacity, Material In-Feed Shuttle Table, Hydraulic Head Tilt, Additional Infeed and Outfeed Conveyors

MARVEL 81A11PC SEMI-AUTOMATIC VERTICAL BANDSAW, s/n E-475311PC, w/ PLC Control, 18" x 20" Capacity, Automatic In-Feed Shuttle Table, Power Tilting Head for Miter Cutting, Hydraulic Clamping, Infeed and Outfeed Conveyors



MARVEL F2150TS AUTOMATIC VERTICAL BANDSAW

MARVEL 81A11PC SEMI-AUTOMATIC VERTICAL BANDSAW

TUMBLAST BATCH CLEANING SYSTEM, MOBILE SAND BLAST

2013 WHEELABRATOR TUMBLAST ABRASIVE SYSTEM, s/n 600429, 42" W x 36" Dia Work Area, Rubber Belt Conveyor, 28 hp Single Wheel, Reclaim System, AIR CLEANING TECHNOLOGY ACT-4 5 hp Dust Collection System, **NOTE:975 Abrasive Hours**

SCHMIDT 6.5CF MOBILE SANDBLASTING UNIT, w/ SCHMIDT 6.5 CF Sandblaster, AXXIOM ACS 250/400 Pressure Tank, ROTAIR D300K Air Compressor, T/A Trailer



WHEELABRATOR TUMBLAST ABRASIVE SYSTEM



SCHMIDT 6.5CF MOBILE SANDBLASTING UNIT

**DAY
1**

LIVE
WEBCAST
AUCTION

**DAY
2**

ONLINE
AUCTION

SALE DATE
Tues., November 19
at 10 AM CT

SALE CLOSING FROM
Weds., November 20
at 10 AM CT

PLATE BENDING ROLLS, FABRICATING MACHINERY, ROBOTIC WELDING CELLS

PLATE BENDING ROLLS

EG HELLER 430/14 4-ROLL HYDRAULIC PLATE BENDING ROLL, s/n 9776, 9/16" x 122" Capacity Rolling, 1/2" Capacity Pre-Bend, 11.42" Top Roll, 10.63" Center Roll, 8.27" Side Rolls, Overhead Support, Side Support

ERMIC 3-ROLL HYDRAULIC PLATE BENDING ROLL, s/n na, w/ 1/4" x 10' Capacity



ERMIC 3-ROLL HYDRAULIC PLATE BENDING ROLLS



EG HELLER 430/14 4-ROLL HYDRAULIC PLATE BENDING ROLL

FABRICATING MACHINERY

ERMIC 200T X 10' COMBINATION HYDRAULIC BRAKE/SHEAR, w/ PLC Control, Programmable Back Gauge

(2) **PIRANHA P70 70-TON IRONWORKERS**, s/n 1027, 806

PIRANHA P50 50-TON IRONWORKER, s/n 6292

300 TON HYDRAULIC STRAIGHTENING PRESS, s/n NA, w/ 60" x 168" Table

EG HELLER ROTARY HYDRAULIC REBAR BENDER, s/n 482740400, w/ 1-3/8" Bending Capacity

FIM VERSA 20 PORTABLE PLATE BEVELER, s/n 200204, w/ 1-3/4" Max. & 5/16" Min. Plate Thickness



FIM VERSA 20 PORTABLE PLATE BEVELER



300 TON HYDRAULIC STRAIGHTENING PRESS



VIEW OF (3) PIRANHA IRONWORKERS



ERMIC 200T X 10' COMBO. HYDRAULIC BRAKE/SHEAR



EG HELLER ROTARY HYDRAULIC REBAR BENDER



PERFORMARC ROBOTIC WELDING CELL



PERFORMARC INTERIOR VIEW

ROBOTIC WELDING CELLS

PERFORMARC ROBOTIC WELDING CELL, w/ 2014 PANASONIC YA-1 6-Axis Robot, 8 Kg Payload, PANASONIC YA-1RJB11Y00 Positioner, 250 kg Max Payload, PANASONIC YA-1UPA 2 External Axis Controller, PANASONIC YA-1UAR Robot Controller, MILLER AUTO AXCESS 450-DI MIG Welder, MILLER COOLMATE 4 Chiller

ROBOTIC WELDING CELLS, (43) WELDERS

ROBOTIC WELDING CELLS (CON'T)

PRI ROBOTIC WELDING CELL, w/ 2011 PANASONIC YA-1 Robot, 6-Axis, 6 Kg Payload, PANASONIC YA-1NPA2 External Axis Controller, (2) PRESTON-EASTIN R2XHS 5,000 lb. Positioners & Tailstocks, PRESTON EASTON RTT20 Robot Transport Unit, MILLER AUTO ACCESS 450 MIG Welder

OTC DAIHEN ROBOTIC WELDING CELL, w/ DAIHEN DR-2300 Robot, 6-Axis, DAIHEN RP2T-500-4-8 Positioner, OTC DAIHEN IRBCX-541 Robot Controller, MILLER AUTO ACCESS 450-DI MIG Welder

(43) WELDERS

(13) MILLER AXCESS 450 MIG BOOM WELDERS, w/ Dual ROI Wire Feed, Platform, Boom

(10) MILLER AXCESS 450 MIG WELDERS, w/ AXCESS Dual Wire Feed MILLER INVISION 456P MIG WELDER

(5) MILLER XMT304 MULTIPROCESS WELDERS

(3) MILLER CP-300 MIG WELDERS

(2) MILLER XMT300 MIG WELDERS, w/ S-60 Wire Feed

LINCOLN POWERWAVE 455M/STT MIG WELDER, w/ POWERFEED 10M Wire Feeder

LINCOLN POWERWAVE 455 MIG WELDER, w/ POWERFEED Wire Feeder

(2) LINCOLN FLEXTEC 350X MIG WELDERS, w/ 84 Flex Feed Wire Feeder

FRONIUS TPS400I MIG WELDER, w/ Dual WF25I Wire Feeders

MILLER SYNCROWAVE 351 TIG WELDER

MILLER SYNCROWAVE 350LX TIG WELDER

MILLER DYNASTY 280 TIG WELDER

(2) TRW SERIES 600 MODEL 201 STUD WELDERS

ELOTOP 1010 STUD WELDER

HYPERTHERM POWERMAX 1650 G3 SERIES PLASMA POWER SOURCE

ALSO: 2008 PRESTON EASTIN PA30HD6 3,000 lb. Welding Positioner, s/n PA30HD6-364;

(3) ALL FAB CORP 1504 1,500 lb. Welding Positioners; Large Selection of **WELDSALE** Welding Tables, Steels Tables, Portable Fume Filters, Clamping, Welding Consumables, and More



PRI ROBOTIC WELDING CELL



OTC DAIHEN ROBOTIC WELDING CELL



VIEW OF WELDERS



WELDSALE WELDING TABLE



VIEW OF PORTABLE FUME FILTERS



MILLER WELDER W/ BOOM



MILLER WELDER W/ BOOM



VIEW OF WELDERS

INSPECTION, MISC. MACHINERY

INSPECTION

2006 ZEISS ACCURA 16/24/14 COORDINATE MEASURING MACHINE, s/n 115337, w/ 119" x 67" Granite Table, VAST XXT Probe, Probe Rack, Joystick (NOTE: Refurbished 2017)

2009 LEICA AT-901-MR PORTABLE LASER TRACKER, s/n 3428, w/ emScon Base User Interface, NIVEL 230 Precision Inclinometer Sensor, LEICA Measurement Cart

2014 ROMER RA-7530-3 ABSOLUTE PORTABLE CMM ARM, s/n 7530-3857-UC

MISC. MACHINERY

TOYODA GOP30X100 10" X 40" UNIVERSAL CYLINDRICAL GRINDER, s/n LG355-6, Wheels Dresser

SUPERMAX YCM-40 3HP CNC MILLING MACHINE, s/n 411602, w/ CENTROID M-50 Control, 60-4200 RPM, Power Draw Bar, 13" x 39" Power Feed Table, 40-Taper

BRIDGEPORT MILLING MACHINE, s/n 150161, w/ 9" x 42" Power Feed Table, 50-4200 RPM, Power Draw Bar, ACU-RITE DRO

CLEEREMAN 28" DRILL PRESS, s/n LD447, w/ 52" x 18" Power Table, 14" Throat, Acu-Rite 2-Axis Digital Readout

CLEEREMAN 28" DRILL PRESS, s/n na, w/ 18" x 36" Table, 5 HP, Acu-Rite 2-Axis DRO

CLEEREMAN 23" DRILL PRESS, s/n na, w/ 29.75" x 16" Table, 1.5" Throat, 3 HP, 75-1500 RPM

CINCINNATI MILACRON 207 MK HORIZONTAL MILL, s/n 13J23P1AHE-67, w/ 13.75" x 59.5" Table, 0-1500 RPM

ALSO: OLIVER 600 Drill Pointer, s/n G6695; **RIDGID 1822-1 Pipe Threader**, s/n 105561; **FLEXARM Tapping Machines**; **Portable Fume Collectors**; **EVERETT 1416 Cold Saw**; **EATON AEROQUIP PROCRIMP 1380 Hose Crimper**; **JRI SAFETY KLEEN SK FL-500 Front Loading Parts Washer**; Huge Selection of Power Tools; Pneumatic Tools; Hand Tools; Tool Boxes



2006 ZEISS ACCURA 16/24/14 CMM



ROMER RA-7530-3 ABSOLUTE PORTABLE CMM ARM



TOYODA GOP30X100 UNIV. CYLINDRICAL GRINDER



SUPERMAX CNC MILLING MACHINE



LEICA AT-901-MR PORTABLE LASER TRACKER



EATON HOSE CRIMPER



RIDGID 1822 POWER THREADER



JRI PARTS WASHER

**PRE-AUCTION
OFFERS
INVITED
ON
MAJOR
ASSETS**

PAINT BOOTH, ROLLING STOCK, FACTORY SUPPORT EQUIPMENT

PAINT BOOTH

PASS-THROUGH PAINT BOOTH, 16' x 60' Double End Door Opening, Steel Panelized Construction, Side Filtration, Lighted, GRACO Promix 2KE and 2KS Paint Delivery System, (6) Pumps



PAINT BOOTH

ROLLING STOCK

2006 HYSTER H250HD2 23,300 LB. DIESEL FORKLIFT, s/n K007E02455N, w/ Hydraulic Fork Adjusters, 8' Forks

2007 LINDE H70D-03 15,500 LB. DIESEL FORKLIFT, s/n E1X353U01337, w/ 7' Forks, Side Shift, Pneumatic Tires

HYSTER E80XL 7,750 LB. ELECTRIC FORKLIFT, s/n C098D0347, w/ 4' Forks, Side Shift

LINDE E30C 5,500 LB. ELECTRIC FORKLIFT, s/n A1X347P0017, w/ 4' Forks, Side Shift

2006 HYSTER E50Z-33 4,800 LB. ELECTRIC FORKLIFT, s/n G108N04623D, w/ 4' Forks, Side Shift

2005 HYSTER E50Z-33 4,800 LB. ELECTRIC FORKLIFT, s/n G108U04032C, w/ 4' Forks, Side Shift

UNICARRIER MCT1B2L25S 4,400 ELECTRIC FORKLIFT, s/n CT1B2-986159, w/ 4' Forks, Side Shift, Fork Positioners

CATERPILLAR NR4500 4,500 LB. ELECTRIC REACH FORKLIFT, s/n 7NR3543715

YALE NR035ABNS24SE095 3,500 LB. ELECTRIC REACH FORKLIFT, s/n N558059

GENIE Z-30N ARTICULATED BOOM LIFT, s/n Z30N-5495, w/ 500 lb, Max Work Load, 28'10" Max Platform Height, 20'8" Max Platform Reach

CASE W14 WHEEL LOADER, s/n 9132891



GENIE Z-30N ARTICULATED BOOM LIFT



2006 HYSTER H250HD2 DIESEL FORKLIFT



2007 LINDE H70D-03 DIESEL FORKLIFT



LINDE E30C 5,500 LB. ELECTRIC FORKLIFT



CATERPILLAR NR4500 4,500 LB. ELEC. REACH FORKLIFT

FACTORY SUPPORT EQUIPMENT

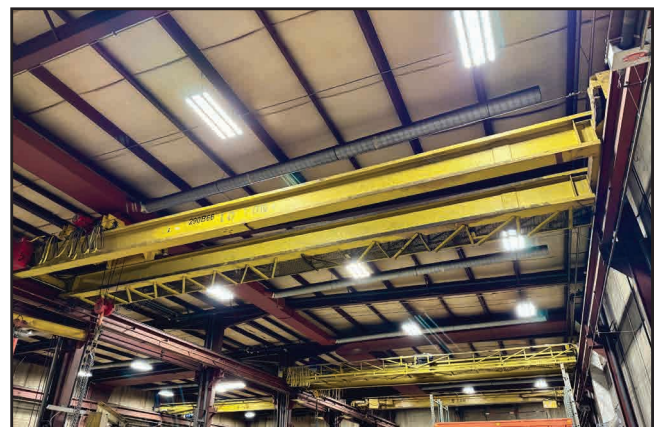
(8) DOUBLE GIRDER & SINGLE GIRDER OVERHEAD BRIDGE CRANES, from 1 Ton to 15 Ton, Spans up to 50', Most Remote Controlled

(9) FREE STANDING BRIDGE CRANES, from 1/2 Ton to 5 Ton, Spans up to 45'

2023 PNEUTECH RK-50VSD-115B-L 50 HP ROTARY SCREW AIR COMPRESSOR, s/n AK100022270, w/ 116 PSI

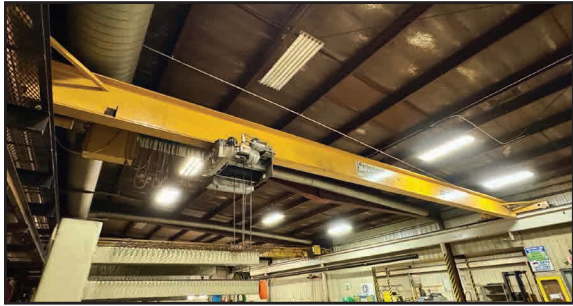
PNEUTECH RDA-300-NC-116 REFRIGERATED AIR DRYER, s/n 22T-H03720, 300 cfm

ALSO: Drill Point Grinders; Tapping Arms; Tap Disintegrators; Double End Grinders; Drill Presses; Shop Presses; **LISTA & STANLEY VIDMAR** Modular Cabinets; **STRONGHOLD** Cabinets; **KNAACK** Gang Boxes; Tool Boxes; Rolling Gantries; Pallet Racking; Ladders; Safety Ladders; Large Quantity of Tool Steel Stock; Baler; Spill Kits & Platforms; Stock Carts; Dumping Scrap Hopper; Hand, Pneumatic & Power Tools; Strapping Caddies; **MAINTENANCE CRIB** Including Large Assortment of Switches, Contactors, Breaker Boxes, Fuses, Belts, Boards, Motors, Bearings, Valves, Hoses, Ballasts, Lights, Chain, Gears, Cylinders, Filters, Sprockets, Cams, Solenoids and More



OVERHEAD BRIDGE CRANE

FACTORY SUPPORT EQUIPMENT, RAW MATERIAL



OVERHEAD BRIDGE CRANE



FREE STANDING CRANE SYSTEM



FREE STANDING CRANE SYSTEM

RAW MATERIAL

OVER 90 TONS OF PLATE, Sheet and Structural Steel, Tool Steel, Stainless Steel Pipe and Tube



POWER TOOLS



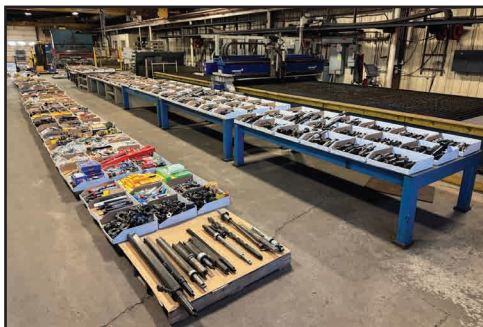
LIFTING MAGNETS



PNEUTECH 50HP VARI-SPEED AIR COMPRESSOR & DRYER



VIEW OF KURT VISES



VIEW OF TOOLING



VIEW OF SHEET, PLATE, & PIPE



VIEW OF SHEET, PLATE, & PIPE



DAY 1 • LIVE WEBCAST AUCTION

SALE DATE

Tuesday, November 19 at 10 AM CT

DAY 2 • ONLINE AUCTION

SALE CLOSING FROM

Wednesday, November 20 at 10 AM CT

SALE LOCATION

828 4th Street NW
Elk River, MN 55330

INSPECTION

Monday, November 18, from 8:30 AM
to 4:30 PM CT, or by appointment

For auction inquiries, please contact Jennifer Reiner at
(847) 545-6374 or jennifer@perfectionindustrial.com

View our current auction schedule at
www.perfectionindustrial.com

Bidding Available Through
BidSpotter

REMOVAL

All small items must be removed by Tuesday, November 26. All other items must be removed no later than Friday, December 13. All removal is strictly on an appointment only basis. Anyone removing purchased items with a lift truck or another powered vehicle must have a certificate of insurance with a \$2M General Liability policy, and that certificate must be provided to the auctioneer for review and approval prior to the auction.

TERMS OF SALE

An 18% Buyer's Premium will be charged on all assets purchased by buyers providing full payment is made within 48 hours following the sale. Acceptable forms of payment are cashier's check, company check (with bank letter of guarantee) or wire transfer within 48 hours of the sale close. For any Buyers failing to pay within the 48 hour stated payment period, the Buyer's Premium will be increased to 20%. All invoices paid with a credit card are subject to a 20% Buyer's Premium, and credit card payments are only allowed up to a maximum of \$2,000 per auction. Everything will be sold to the highest bidder, in accordance with the Auctioneer's customary "Terms of Sale", copies of which will be posted on the Auctioneer's website and subject to additional terms announced the day of sale. All items are sold "As is, Where is" without any warranty, express or implied.

FURTHER INFORMATION

For auction inquiries, please contact Jennifer Reiner at (847) 545-6374 or jennifer@perfectionindustrial.com.